



Stoneacre
Properties



Citispace

Leylands Road Leeds, LS2 7JT

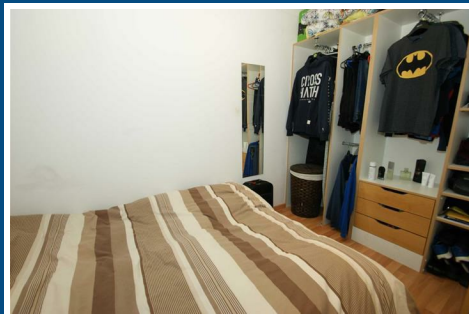
£55,000



Citispac

Leylands Road Leeds, LS2 7JT

£55,000



COMMUNAL ENTRANCE

Secure entry system, postboxes with stairs to mezzanine level apartment entrance.

KITCHEN / DINING/ LOUNGE

Wood strip laminate flooring, wall mounted electric heater, double glazed floor to ceiling windows with sliding door and Juliette balcony. Kitchenette comprising stainless steel sink, two ring electric hob, oven and space for fridge.

BEDROOM

Wood strip laminate flooring, built in open wardrobe.

BATHROOM

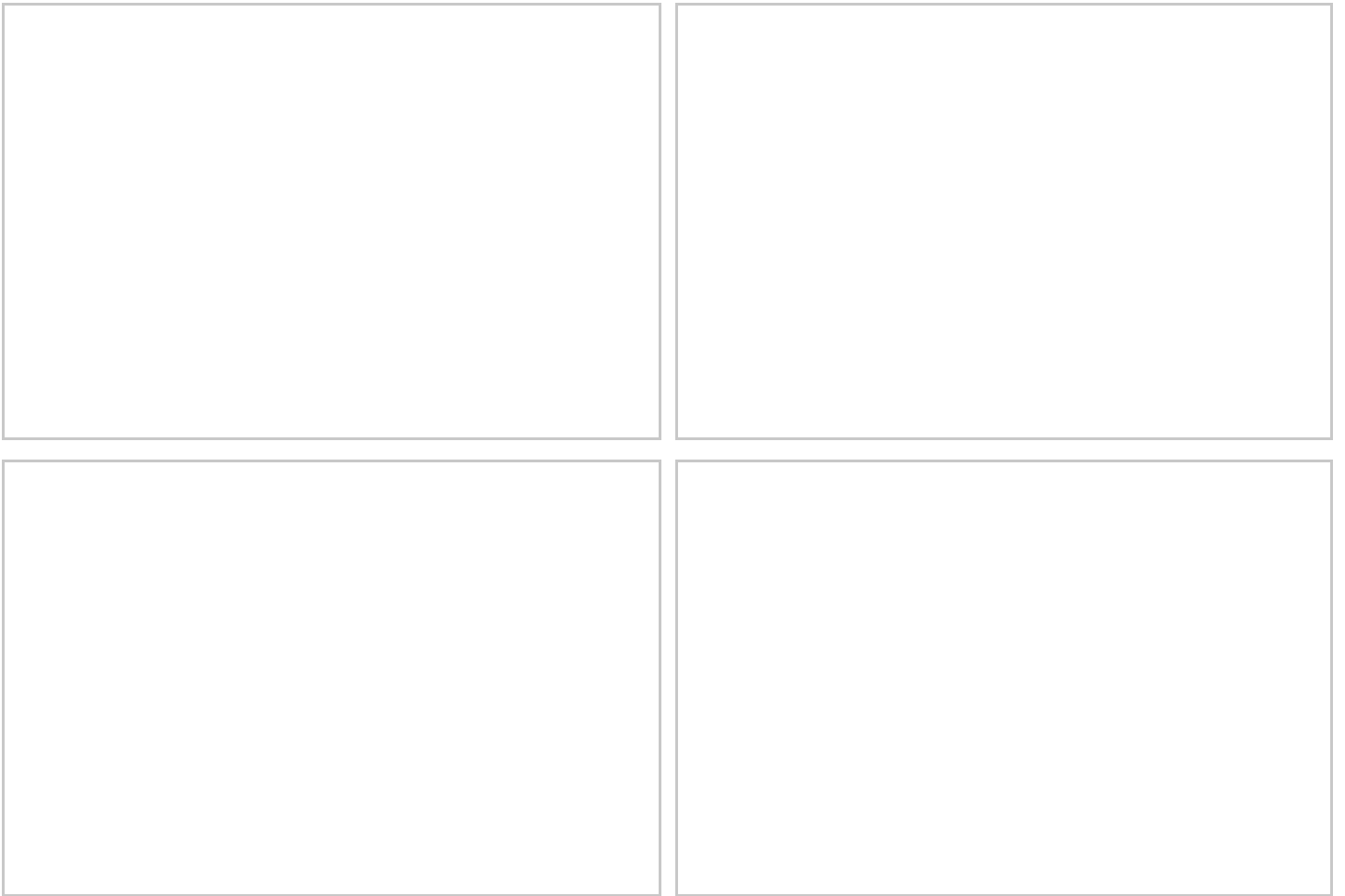
Shower room comprising W.C, wash hand basin and shower cubicle.

TENANCY

The property is to be sold as a tenanted investment, with the current tenancy being an AST with rent of £595pcm until April 2025. Further information is available upon request.

LEASE

We are advised the property is leasehold with a term of 125 years from 2004. The current service charge is approximately £904.86 per 6 months and the ground rent is £250 per annum. A buyer is advised to obtain verification from their solicitor or legal advisor.



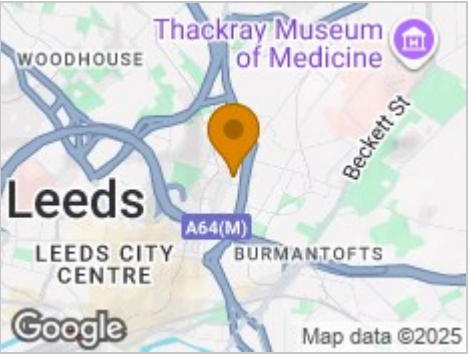
Road Map



Hybrid Map



Terrain Map



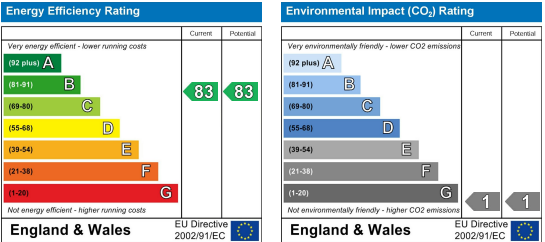
Floor Plan



Viewing

Please contact our Chapel Allerton Sales Office on 0113 237 0999 if you wish to arrange a viewing appointment for this property or require further information.

Energy Efficiency Graph



These particulars, whilst believed to be accurate are set out as a general outline only for guidance and do not constitute any part of an offer or contract. Intending purchasers should not rely on them as statements of representation of fact, but must satisfy themselves by inspection or otherwise as to their accuracy. No person in this firms employment has the authority to make or give any representation or warranty in respect of the property.